

# YK SERIES (Single Phase Filters)



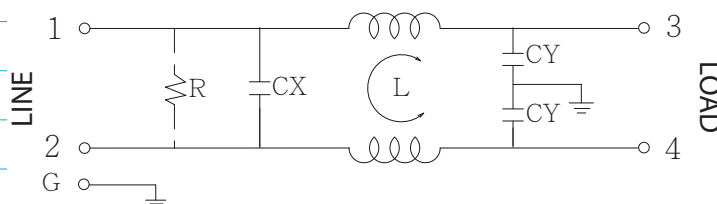
## Features

- The YK series is general purpose single phase filter.
- The rated current can be offered from 1 to 10 amps.
- The compact size for easy installation and space saving.
- Various output selections such as fast-on terminal, and lead wire.
- Low leakage current version upon requested.
- All parts are approved by UL ,CSA ,VDE and CE
- Applications comprising Electrical and electronic equipment, household equipment, Medical equipment, Datacom equipment, Test and measurement equipment, Fitness machine.

## Technical Specification

|                              |               |
|------------------------------|---------------|
| Rated voltage                | 125/250VAC    |
| Rated currents               | 1 to 10A      |
| Operating frequency          | 50/60Hz       |
| Hipot rating(Line-to-line)   | 1450VDC       |
| Hipot rating(Line-to-ground) | 2250VDC       |
| Operating temperature        | -25~+85°C     |
| Safety compliance            | UL,CSA,VDE,CE |

## Typical electrical schematic



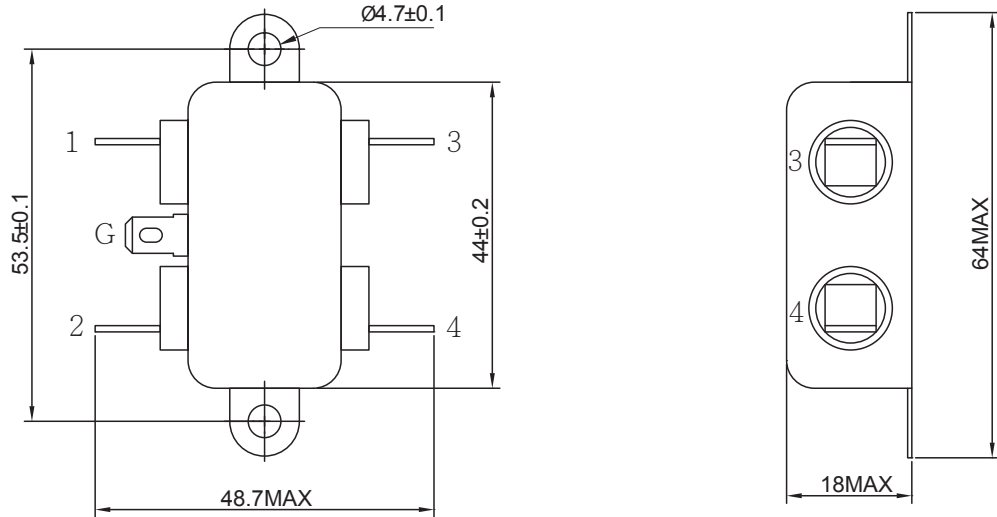
\*With optional ground choke and resistor.  
R: 1M ohm, 1/4W min.

## Filter Selection Table

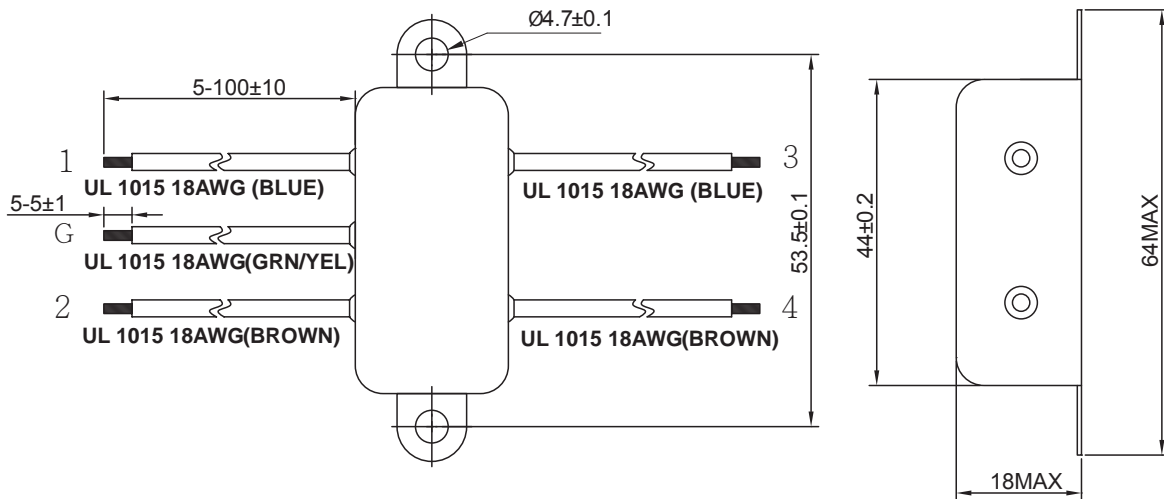
| Part No. | Rated Current (A) | Inductance L(mH) | Capacitance CX( $\mu$ F) | Capacitance CY(pF) | Output connections                       |
|----------|-------------------|------------------|--------------------------|--------------------|--|
| YK01T1   | 1                 | 3.7              | 0.1                      | 3300               | Fast-on terminal<br>(optional lead-wire) |
| YK03T1   | 3                 | 1.8              | 0.1                      | 3300               |  |
| YK06T1   | 6                 | 0.7              | 0.1                      | 3300               |  |
| YK10T1   | 10                | 0.3              | 0.1                      | 3300               |  |

# Physical Dimensions: (mm)

YK-T1



YK-T (Lead-wire)



## Typical filter attenuation (Common mode — Normal mode —)

